

How to use the EESIFLO Logger/downloading software.

The software that came with the CD Rom provided in your 10FP package will show up in your program files menu as "EESiLogger ". Installing it is very simply. Just click on the setup icon and follow instructions.

The software provided with your EESIFLO 10FP hand held ultrasonic flowmeter can be used to dump data into a standard Windows PC using 98/Me or Windows XP.

Section 4-63 of the 10FP manual explains how to use the transmit mode in more detail.

While you are in Flow Mode (Press "FLOW" if you are not) you can get into the Transmit Mode by pressing (SHFT) and (TRNS) You will then see 4 options on the screen

- TRANSMIT
- TRANSMITTING
- 1. DATA
- 2. LOGGING DATA
- 3. FILE
- 4. BAUD RATE

If you chose number 1. "DATA" you will be transmitting live flow readings from the flow computer to your PC

If you chose number 2. "LOGGING DATA" you will be transmitting older logged data to the computer. Refer to the 10FP manual 4-47 for more details on logging

If you choose 3. "FILE" You will be transmitting SITE Parameters that you used in the different files that you named.

Number 4. "BAUD RATE" allows you to change the Baud rate of the device. The default setting is 9600

Once you have loaded the EESIFLO software onto your PC , make sure that the communication settings for your PC are exactly the same as the default 10FP settings. Refer to Fig. 1 for exact settings.

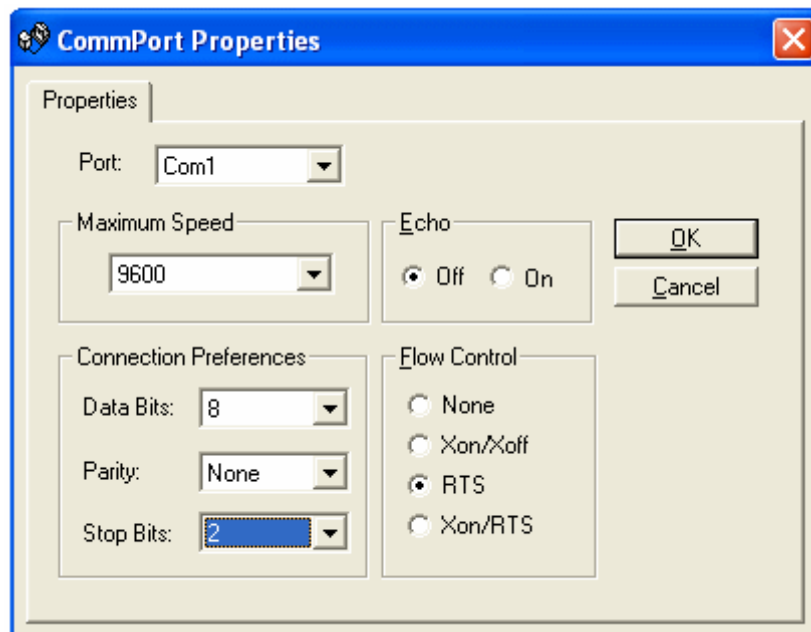
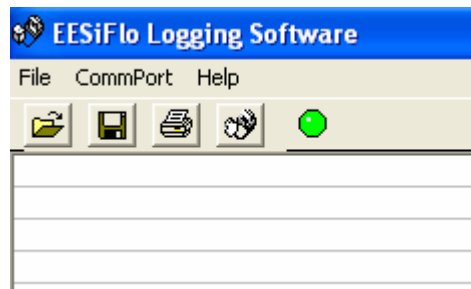


Fig. 1 Communication Port settings

Once you have attached the supplied communication cable to the 10FP and your com port you are ready to receive data. Make sure that the toggle light is green before transmitting data. Figure 2 shows the green toggle



Once you have captured all the data that you need , you can save the data as a CSV file and open it up into Excel spreadsheets which can help you make meaningful reports.

You may also want to print the data to a normal printer attached to your PC or network with the program's print function.

If you need futher assistance on using this program , please contact your local EESIFLO representative